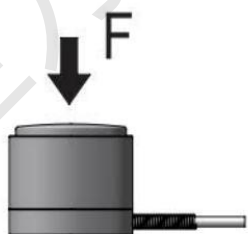


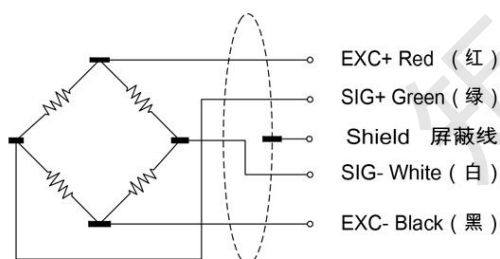
JUL-D16 单压力传感器



■传感器受力图 Force diagram of sensor



■传感器接线图 Sensor wiring diagram

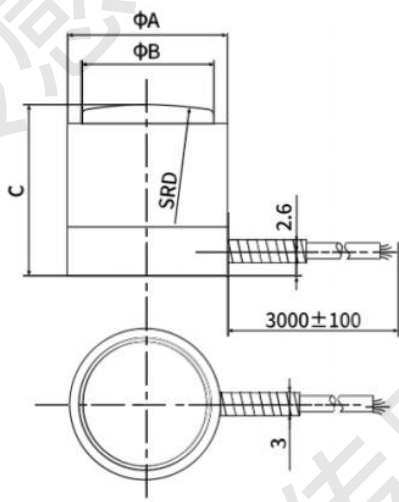


■特点与用途 Features&Applications

- ▶外形小巧，便于安装
- ▶压式承载设计，不锈钢材料，形变小
- ▶采用高精度电阻应变原理，动态响应频率高
- ▶主要用于汽车压装、自动化组装、3C 产品测试、机器人夹持力，键盘手感度测试等安装空间局限的领域

| 技术参数 Technical specifications | | |
|-------------------------------|------------------------|----------------|
| 额定量程 | Capacity | 10-150KN (可选) |
| 输出灵敏度 | Rated output | 2.0±0.2mV/V |
| 零点输出 | Zero balance | ±0.04mV/V |
| 非线性 | Non-linearity | 0.5%F.S |
| 滞后 | Hysteresis | 0.2%F.S |
| 重复性 | Repeatability | 0.1%F.S |
| 输入电阻 | Input impedance | 350±10Ω |
| 输出电阻 | Output impedance | 350±5Ω |
| 绝缘电阻 | Insulation | ≥5000MΩ/100VDC |
| 激励电压 | Recommended excitation | 5~15VDC |
| 温度灵敏度漂移 | Temp.effect.on output | 0.05%F.S./10°C |
| 零点温度漂移 | Temp.effect.on zero | 0.05%F.S./10°C |
| 工作温度 | Operation temp range | -20~80°C |
| 安全超载 | Safe overload | 150% |
| 极限超载 | Ultimate overload | 200% |
| 防护等级 | IP Class | IP65 |
| 电缆尺寸 | Cable size | Φ2x2000mm |
| 材质 | Material | 不锈钢 |

外形尺寸 External Dimension



| 量程(KN) | A | B | C | D |
|---------|------|------|------|-----|
| 10,20 | 16 | 14 | 15 | 50 |
| 50,75 | 22.4 | 20.4 | 22.4 | 100 |
| 100,150 | 31.8 | 28.9 | 28.7 | 125 |